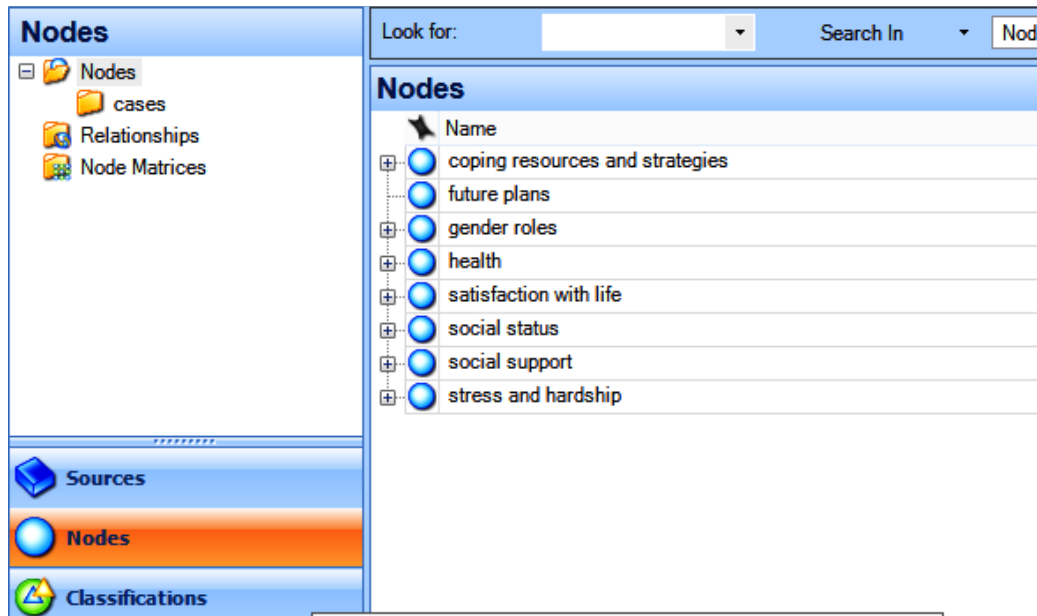
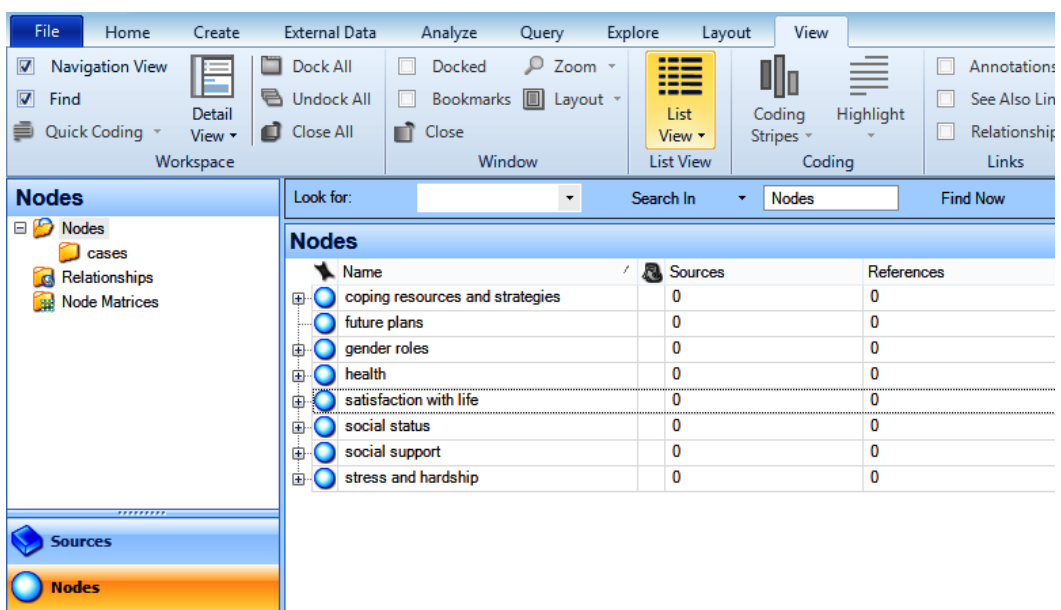


Coding Framework

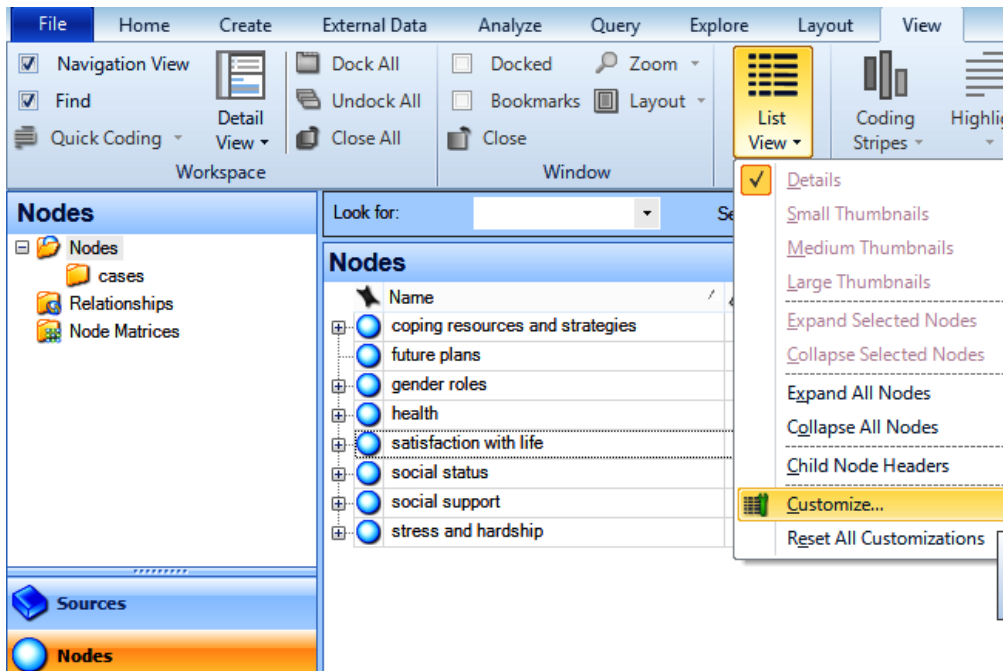
1. Click on **Nodes (in Navigation View)** - see screen shot below:



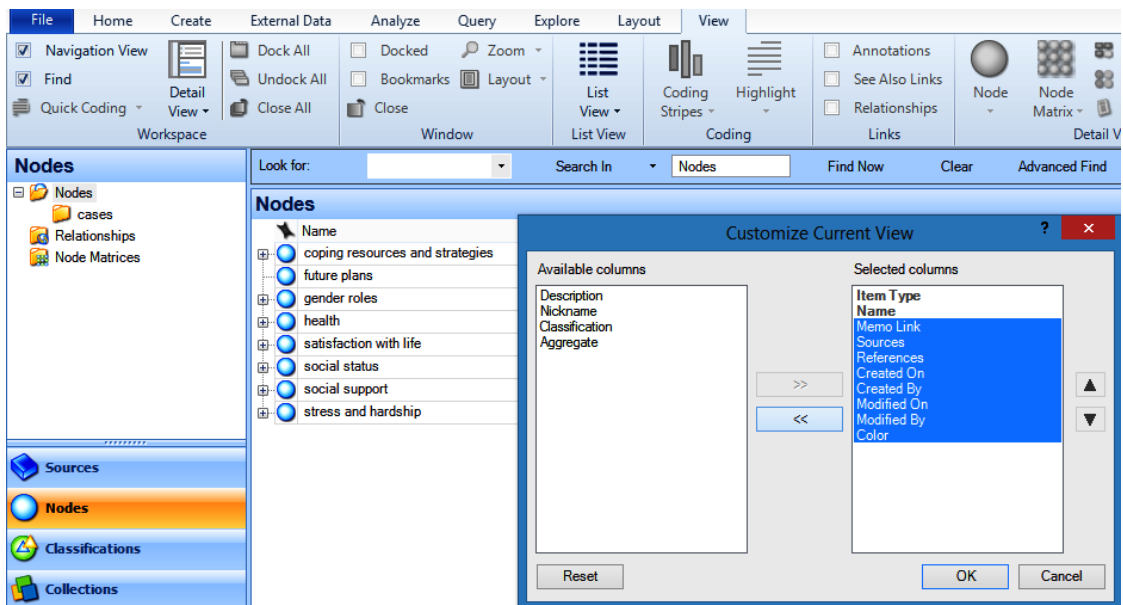
2. Then Go To **Layout** Tab (at the top of the screen):



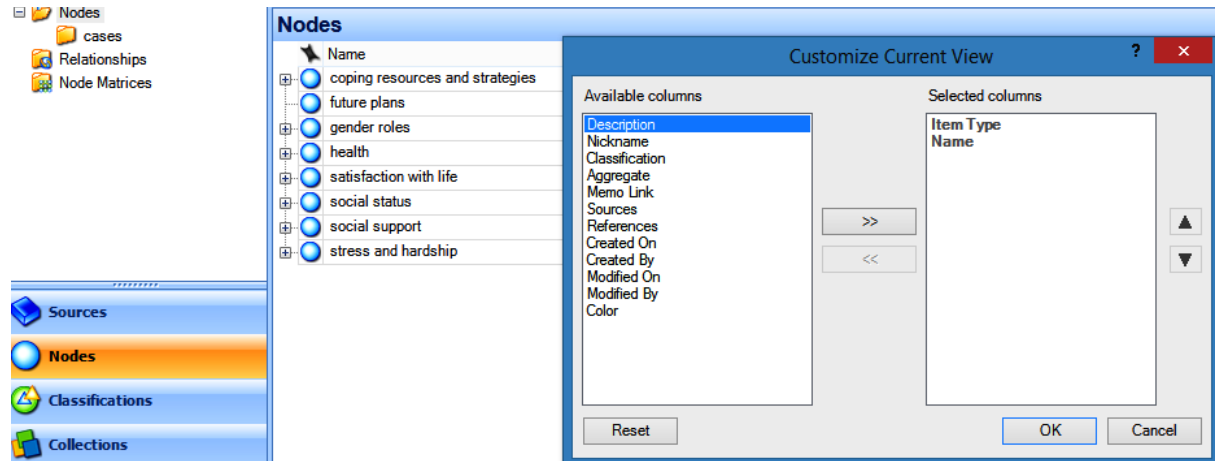
3. On drop down list, select **Customize:**



4. Move all the items from 'selected columns' to available columns using the back arrows << :

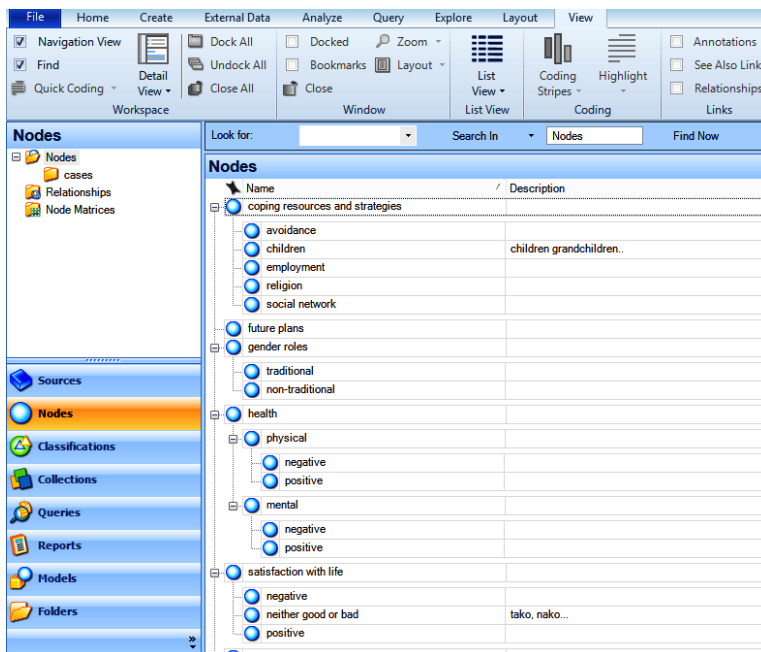
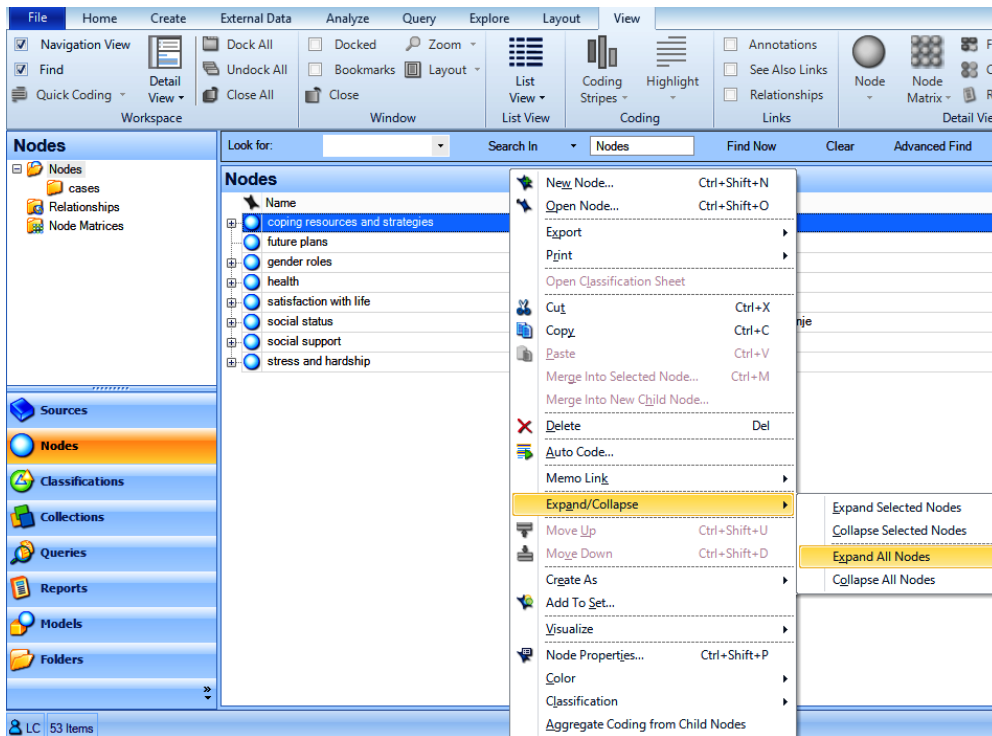


5. Move 'Description' to selected columns using the forward arrow:



6. Then Click **OK**.

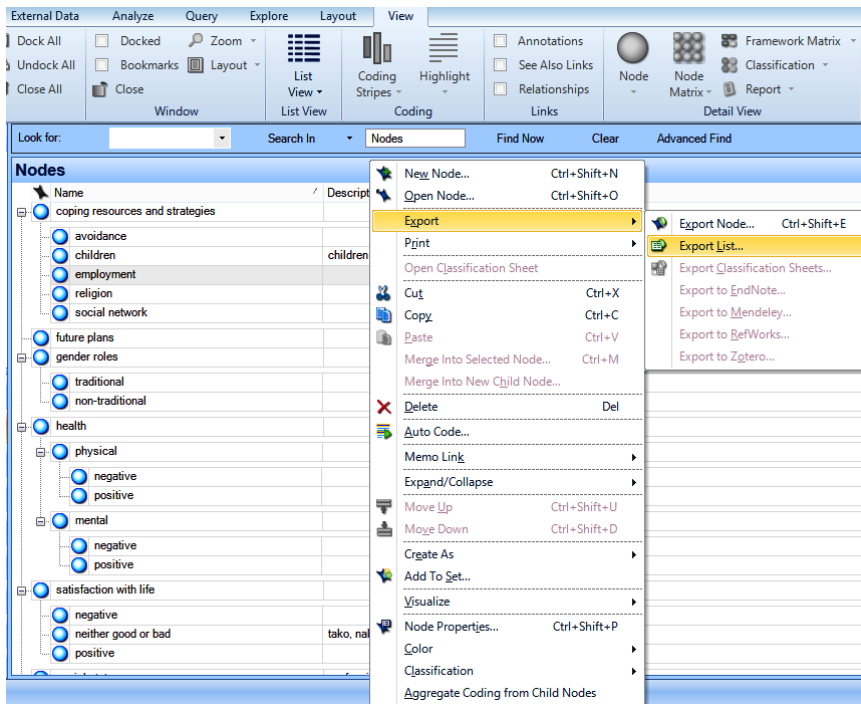
7. **To see all of the coding framework**, i.e. parent nodes/core themes and child nodes/sub-themes, highlight one of the parent nodes and right mouse click and then **select Expand/Collapse** and then **select 'Expand All Nodes'**. See both screen shots below:



8. Now you can **review your coding frameworks and description**, add to the coding framework with new parent nodes/core themes or child nodes/sub-themes as well as merge nodes, delete nodes and alter descriptions of nodes.

9. **To share your coding framework with the team** (so that you end up with the same/very similar coding framework),

right mouse click over list of nodes and **select Export**, then **select Export List** (it will save as an excel file):



10. When you open the saved excel file of your coding framework, **click on the + signs next to the core themes to reveal the coding framework**:

The screenshot shows an Excel spreadsheet with the following data:

	A	Description
1		
2	coping resources and strategies	
3	avoidance	
4	children	children grandchildren..
5	employment	
6	religion	
7	social network	
8	future plans	
9	gender roles	
12	health	
19	satisfaction with life	
23	social status	profession and income, housing/stambeno pitanje
32	social support	
37	stress and hardship	
55		
56		